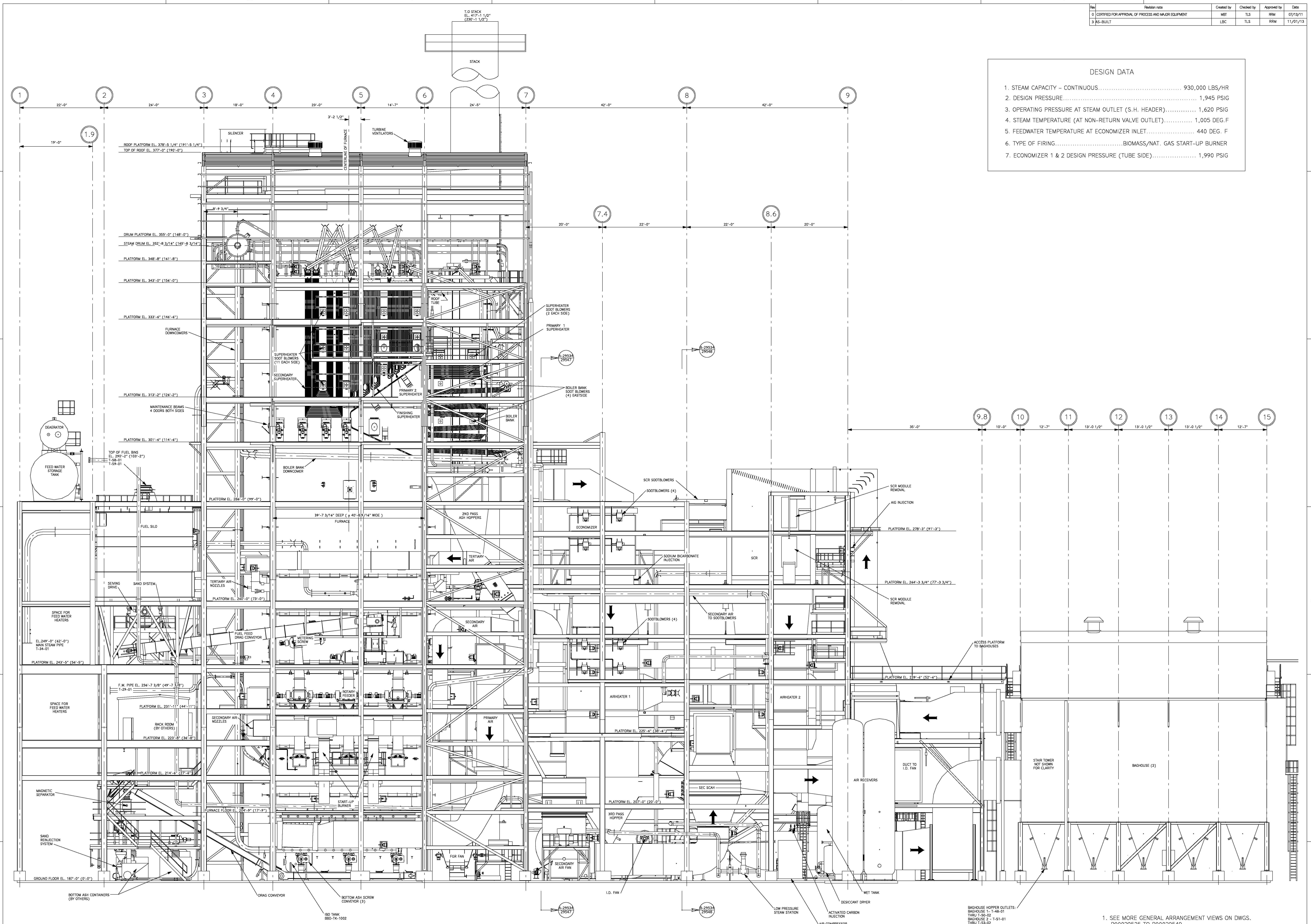


Rev	Revision note	Created by	Checked by	Approved by	Date
0	CERTIFIED FOR APPROVAL OF PROCESS AND MAJOR EQUIPMENT	MEI	TLS	RRM	07/13/11
3	AS-BUILT	LBC	TLS	RRM	11/01/13

DESIGN DATA

1. STEAM CAPACITY - CONTINUOUS..... 930,000 LBS/HR
2. DESIGN PRESSURE..... 1,945 PSIG
3. OPERATING PRESSURE AT STEAM OUTLET (S.H. HEADER)..... 1,620 PSIG
4. STEAM TEMPERATURE (AT NON-RETURN VALVE OUTLET)..... 1,005 DEG. F
5. FEEDWATER TEMPERATURE AT ECONOMIZER INLET..... 440 DEG. F
6. TYPE OF FIRING..... BIOMASS/NAT. GAS START-UP BURNER
7. ECONOMIZER 1 & 2 DESIGN PRESSURE (TUBE SIDE)..... 1,990 PSIG



ELEVATION VIEW
LOOKING EAST

1. SEE MORE GENERAL ARRANGEMENT VIEWS ON DWGS. P00029535 TO P00029549

		This document is the exclusive intellectual property of Metso Corporation and/or its subsidiaries and is furnished solely for operating and maintaining the specific project. Reuse of the document for any other project or purpose is prohibited. The accuracy or the information shall not be reproduced, copied or disclosed to a third party without prior written consent of the company.		Scale 1/8"=1'-0"
Proj. no. GRECBFB / 190022	Proj. name GREC, LLC - GAINESVILLE, FL	Date 09/02/13	Rev. AS-BUILT	Sheet no. P00029534
Title GENERAL ARRANGEMENT SECTIONAL SIDE VIEW				Revision 3